

E2E

- ・近接スイッチ
- ・PROXIMITY SWITCH
- ・DÉTECTEUR DE PROXIMITÉ
- ・NÄHERUNGSMITTLER
- ・SENSORE DI PROSSIMITA
- ・INTERRUPTOR DE PROXIMIDAD

TRACEABILITY INFORMATION:

Representative in EU: Manufacturer:
 Omron Europe B.V. Omron Corporation,
 Weisgallen 67-69 Sensing Devices Division H.Q.
 2132 JD Hoordonk, Industrial Sensors Division & Application Sensors Division
 The Netherlands Shiohaji Horikawa,
 Shimo-ogino-4u, Kyoto 600-8530 JAPAN

The following notice applies only to products that carry the CE mark:
 Notice: This is a class A product. In residential areas it may cause radio interference. In which case the user may be required to take adequate measures to reduce interference.

0673729-8E



■この製品は人体の保護を目的とした安全回路にはご使用いただけません。

■安全に正しく使用していただくために、お使いになる前に必ず「取扱い方法を記載したカタログ」をお読みになり十分に理解してください。

Do not use this product as a safety device nor a part of safety systems for ensuring safety of persons.

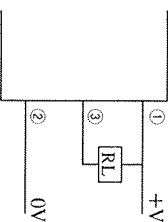
Ne pas utiliser ce produit en tant que dispositif de sécurité ou même élément de dispositif assurant l'asc-curié de personnes.

Verwenden Sie dieses Produkt nicht als Sicherheitseinrichtung oder Teil eines Sicherheitssystems für Personenschutz.

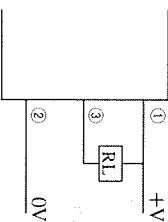
Non utilizzare questo prodotto né come dispositivo come parte di un sistema per tutelare la sicurezza delle persone.

No utilizar este producto como dispositivo de seguridad ni como parte de sistemas de seguridad paragarantizar la seguridad de personas.

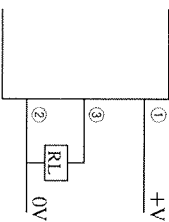
E2E-C(X)□□□ (NPN)



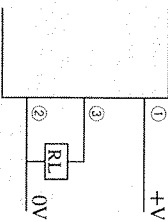
E2E-X□□E□ (NPN)



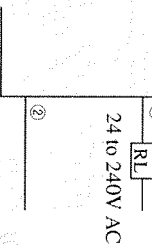
E2E-C(X)□□□ (PNP)



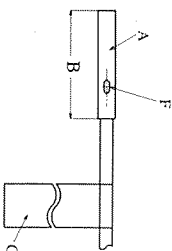
E2E-X□□F□ (PNP)



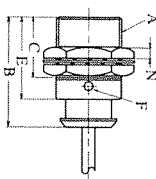
E2E-X□□Y□



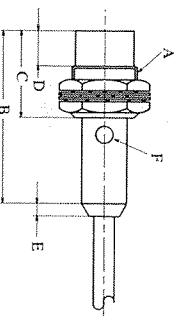
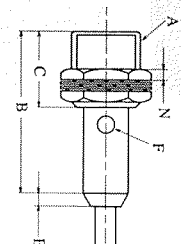
①	茶	Brown	Marron	Braun
②	青	Blue	Bleu	Blau
③	黒	Black	Noir	Schwarz
①	茶	Marrone	Marrón	
②	青	Blu	Azul	
③	黒	Nero	Negro	



	A	B
E2E-CR8C(B)□	4dia.	25
E2E-C1C(B)□	5.4dia.	25



	A	B	C	D	E	N
E2E-X5E(F)□	M18P=1.0	47	29	-	40	4
E2E-X5Y□	M18P=1.0	47	29	-	40	4
E2E-X5Y□-53	M18P=1.0	57	39	-	48	4
E2E-X10ME(F)□	M18P=1.0	47	29	10	40	4
E2E-X10MY□	M18P=1.0	47	29	10	40	4
E2E-X10E(F)□	M18P=1.0	57	39	10	48	4
E2E-X10Y□	M30P=1.5	57	38	-	50	5
E2E-X10Y□-53	M30P=1.5	57	38	-	50	5
E2E-X18ME(F)□	M30P=1.5	57	38	13	50	5
E2E-X18MY□	M30P=1.5	57	38	13	50	5
E2E-X18MY□-53	M30P=1.5	57	38	13	50	5



	A	B	C	D	E	N
E2E-X1C(B)□	M5P=0.5	25	15	-	-	3
E2E-X1R5E(F)□	M8P=1.0	30	20	-	-	4
E2E-X1R5Y□	M8P=1.0	40	30	-	-	4
E2E-X2ME(F)□	M8P=1.0	30	20	5	-	4
E2E-X2MY□	M8P=1.0	40	30	5	-	4
E2E-X2E(F)□	M12P=1.0	35	24	-	3	4
E2E-X2Y□	M12P=1.0	40	29	-	3	4
E2E-X5ME(F)□	M12P=1.0	35	24	7	3	4
E2E-X5MY□	M12P=1.0	40	29	7	3	4

F	動作表示灯	Operation indicator	Indicateur d'opération	Bereichsanzeige	Spia funzionamento	Indicador de operación
G	铭板	Name label	Label	Typenbezeichnung	Etichetta	Etiqueta

